

Béton ou métal, Matière vous ouvre la voie. - Concrete or steel, Matière leads the way.

# FLYOVER

 **Unibridge**<sup>®</sup>  
trading



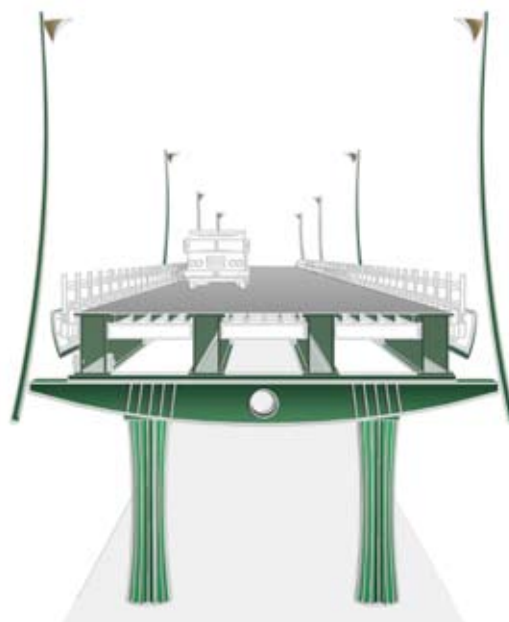
Punaruu - Tahiti

## GENERAL PRESENTATION

Matiere® shows its expertise coming with two distinct kinds of flyover :  
**orthotropic flyover and Unibridge® flyover.**

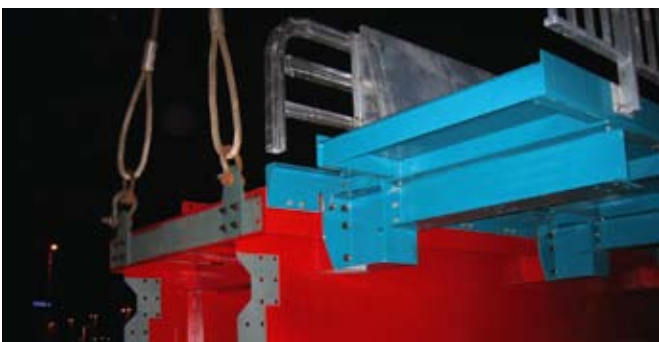
**Orthotropic flyover** is designed like an orthotropic deck. It has a full modularity but it cannot be fitted with a concrete decking. Assembly of the different elements is made thanks to blots whereas Unibridge® flyover uses a pin connection system.

**Unibridge® flyover** is based on the Matiere® patented system of modular bridges Unibridge®. It is modular as well as in length and in width and enables a fast and simple installation. The Unibridge® flyover offers the capability to be build either with a steel or a concrete deck.





ORTHOTROPIC FLYOVER - MARSEILLE - FRANCE





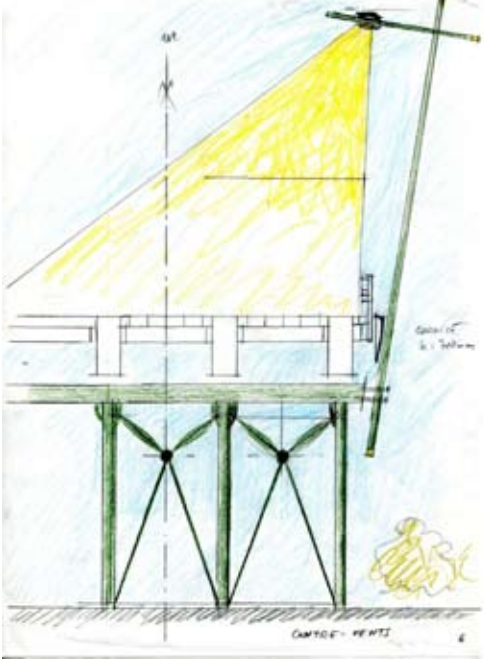
ORTHOTROPIC FLYOVER - JALANDONI FLYOVER - ILOILO - PHILIPPINES



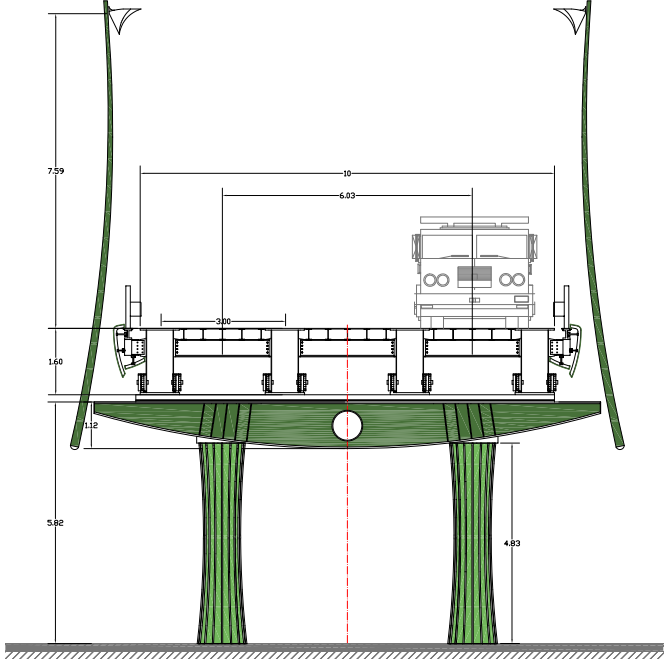


Bahrain flyover project

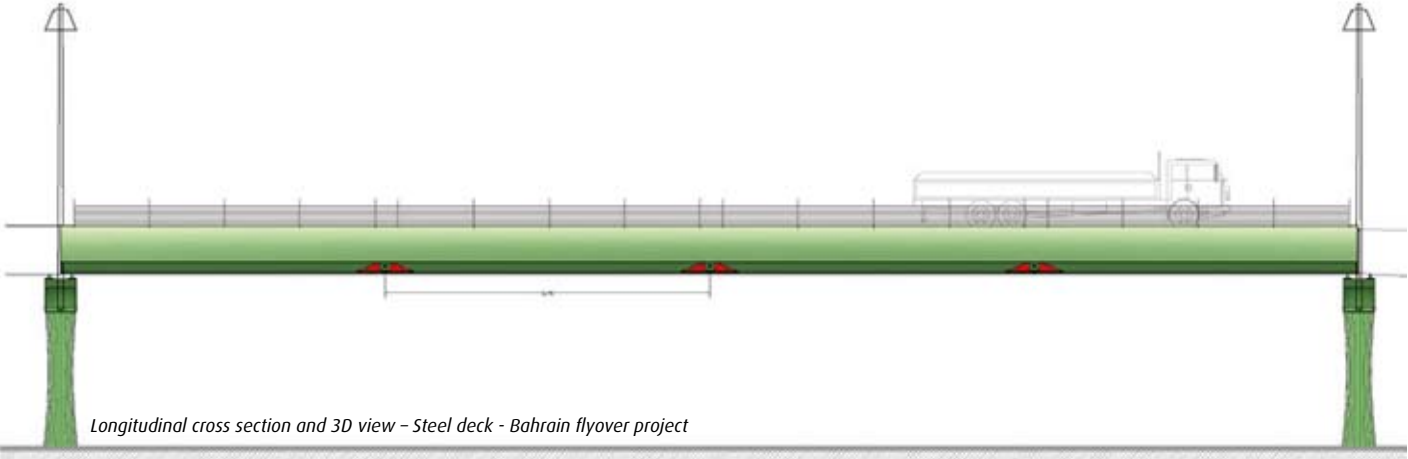
UNIBRIDGE® FLYOVER



Architect sketches - Bahrain flyover project



Transverse cross section - Steel deck - Bahrain flyover project



Longitudinal cross section and 3D view - Steel deck - Bahrain flyover project



UnibridgeTrading® is a shared subsidiary of **MATIERE®** and **EIFFEL®**, for the marketing, manufacture and construction of metallic, modular, permanent and rapid-assembly bridges.



**Matière®**

1, Place d'Iéna  
75116 PARIS FRANCE  
2, rue Louis Matière  
BP 54 - 15130 ARPAJON/CÈRE  
FRANCE

Tél. : +33 (0) 4 71 46 50 00  
Fax : +33 (0) 4 71 64 63 90

www.matiere.fr  
www.unibridge.net.au

**EIFFEL**

48-50, rue de Seine  
92707 COLOMBES cedex  
FRANCE

Tél. : +33 (0) 1 47 60 47 00  
Fax : +33 (0) 1 47 60 47 01

www.eiffel.fr