

Béton ou métal, Matière vous ouvre la voie. - Concrete or steel, Matière leads the way.

FLYOVER





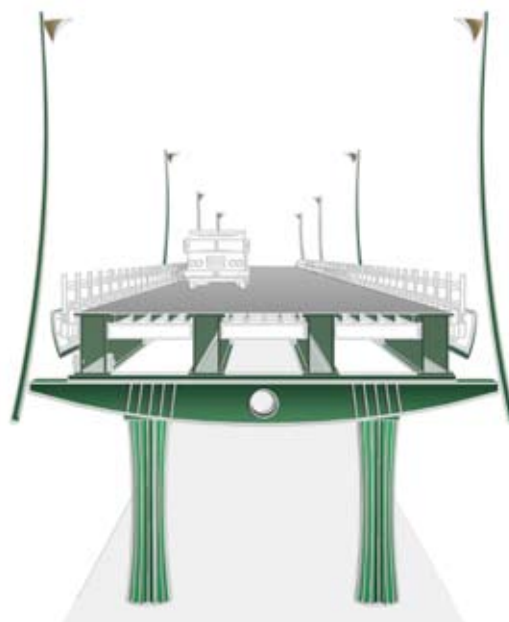
Punaruu - Tahiti

GENERAL PRESENTATION

Matiere® shows its expertise coming with two distinct kinds of flyover :
orthotropic flyover and Unibridge® flyover.

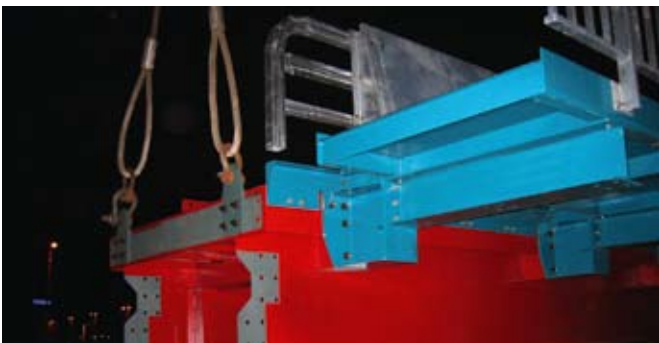
Orthotropic flyover is designed like an orthotropic deck. It has a full modularity but it cannot be fitted with a concrete decking. Assembly of the different elements is made thanks to blots whereas Unibridge® flyover uses a pin connection system.

Unibridge® flyover is based on the Matiere® patented system of modular bridges Unibridge®. It is modular as well as in length and in width and enables a fast and simple installation. The Unibridge® flyover offers the capability to be build either with a steel or a concrete deck.





ORTHOTROPIC FLYOVER - MARSEILLE - FRANCE





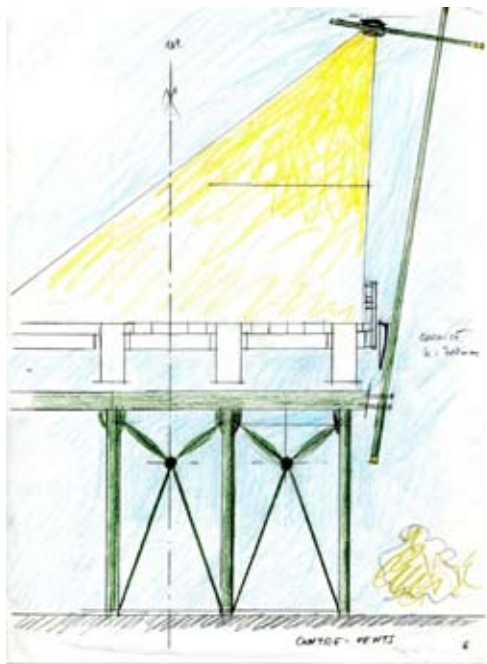
ORTHOTROPIC FLYOVER - JALANDONI FLYOVER - ILOILO - PHILIPPINES



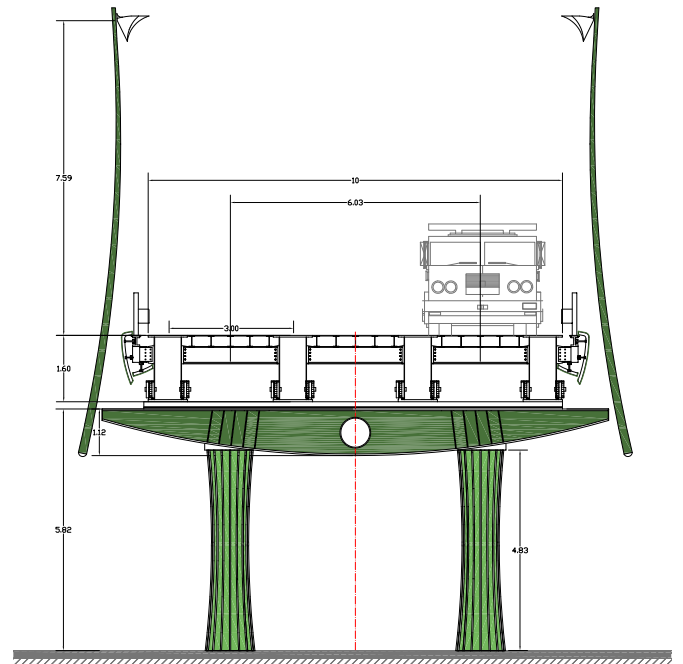


Bahrain flyover project

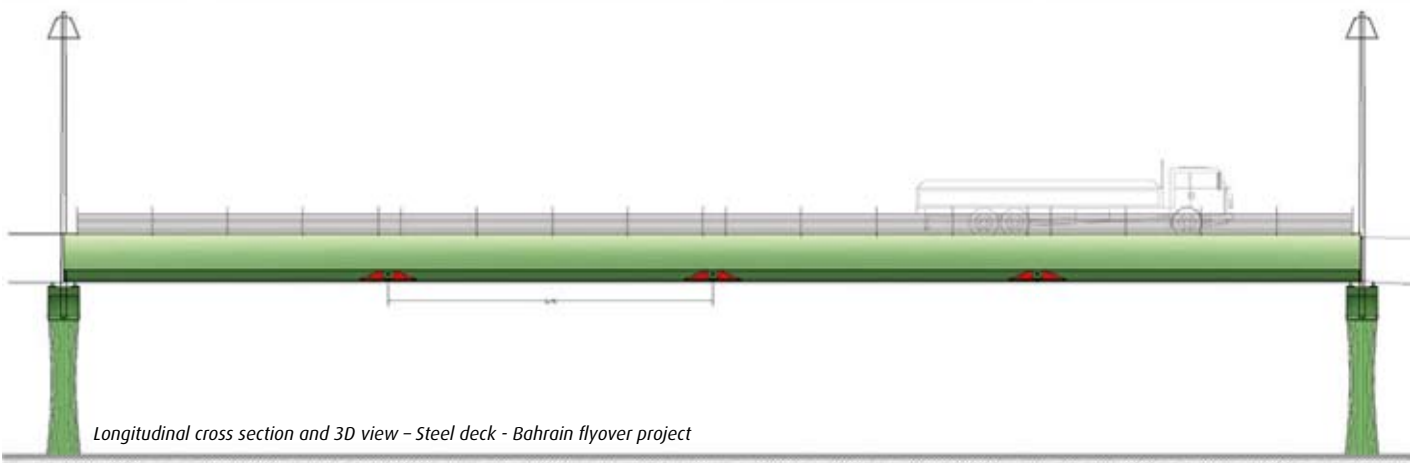
UNIBRIDGE® FLYOVER



Architect sketches - Bahrain flyover project



Transverse cross section - Steel deck - Bahrain flyover project



Longitudinal cross section and 3D view - Steel deck - Bahrain flyover project



• Références Matière®

Caniveau largeur 40 cm

A19

Extrémité

GBA

3/2

.30

5,000

9,463

4,755

0 env.

MUR 1

2,51

Risberme 120.340

UnibridgeTrading® is a shared subsidiary of **MATIERE®** and **EIFFEL®**, for the marketing, manufacture and construction of metallic, modular, permanent and rapid-assembly bridges.

A

F

Risberme 120.340



SP1

122.756
P.L

env.

MUR 2

122.150

2,51

3/2

3/2



Unibridge
trading

5,000

.30

9,463

Matière®



EIFFEL

1, Place d'Iéna
75116 PARIS FRANCE
2, rue Louis Matière
BP 54 - 15130 ARPAJON/CÈRE
FRANCE

Tél. : +33 (0) 4 71 46 50 00
Fax : +33 (0) 4 71 64 63 90

www.matiere.fr
www.unibridge.net.au

48-50, rue de Seine
92707 COLOMBES cedex
FRANCE
Tél. : +33 (0) 1 47 60 47 00
Fax : +33 (0) 1 47 60 47 01
www.eiffel.fr

3,000